

Xilo Console

DESIGN BY DELINEO DESIGN STUDIO

Wall-mounted console clad in metal on all sides, back excluded, with doors opening. Equipped with inner pull-out opening drawers, 1 per each door.

Consolle sospesa rivestita in metallo su tutti i lati, schienale escluso, con apertura ad ante. Dotato di cassetti interni con apertura estraibile, 1 per ogni anta.

METAL FINISHES



E5

G2

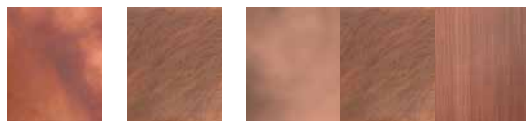
MIX



F2

G3

MIX



G5

G4

MIX

PRODUCT SPECIFICATION

Structure	Matt lacquered RAL 7024 wood
Assembly	Shipped disassembled
Usage	Indoor use
Details	<ul style="list-style-type: none">- Clad in metal on all sides, back excluded- Pull-out door opening- Equipped with inner drawer with pull opening- Load-bearing wall or reinforced plasterboard is required- Wall fixing system included, fixing screws excluded

SPECIFICHE PRODOTTO

Struttura	Legno laccato RAL 7024 opaco
Assemblaggio	Spedita montata
Utilizzo	Uso interno
Dettagli	<ul style="list-style-type: none">- Rivestita in metallo su tutti i lati, schienale escluso- Apertura anta a tirare- Dotata di cassetti interni con apertura estraibile- È necessaria una parete portante o un cartongesso rinforzato- Sistema di fissaggio a parete incluso, viti di fissaggio escluse

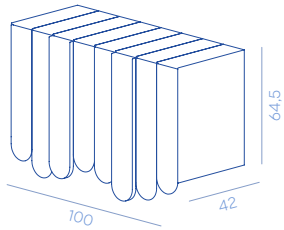
ON REQUEST

Finishes	The product is available only in the finishes listed
Dimensions	The product is available only in the dimensions listed

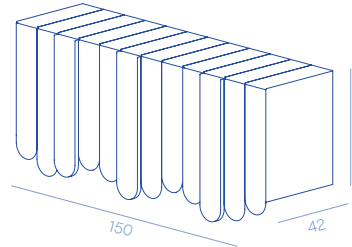
SU RICHIESTA

Finiture	Il prodotto è disponibile solo nelle finiture previste
Dimensioni	Il prodotto è disponibile solo nelle dimensioni previste

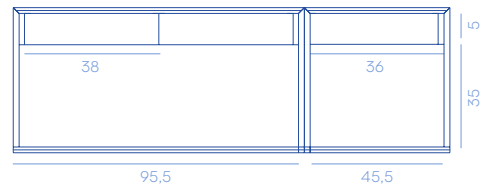
Xilo Console 100
DC705
 50 kg



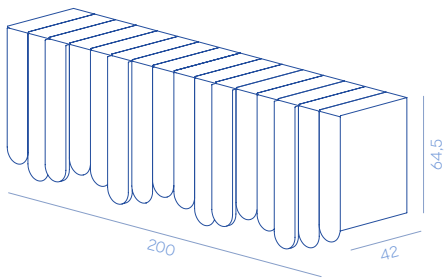
Xilo Console 150
DC706
 75 kg



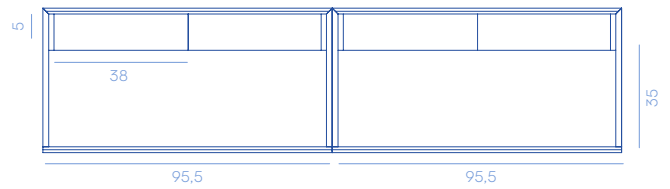
Internal measurements / Misure interne



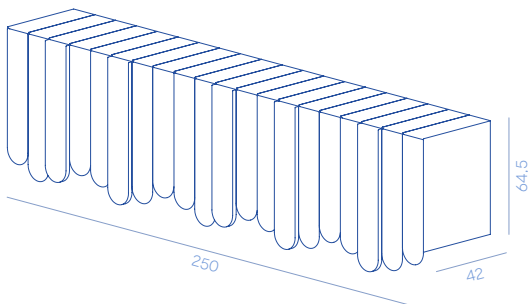
Xilo Console 200
DC707
 100 kg



Internal measurements / Misure interne



Xilo Console 250
DC708
 125 kg



Xilo Console 300
DC709
 150 kg

