

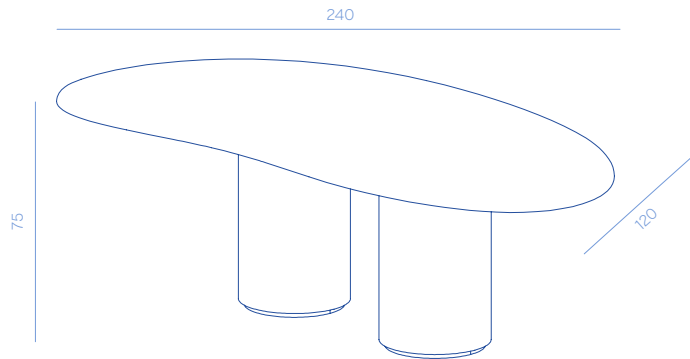
Baia

DESIGN BY ZANELLATO/BORTOTTO

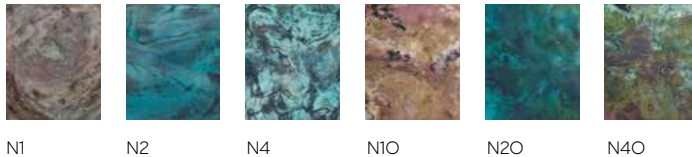
Sculptural table characterized by a top with organic shapes and two cylindrical legs base.

Tavolo scultoreo caratterizzato da un piano dalle forme organiche e base a due gambe cilindriche.




Baia
DC667
145 kg






METAL FINISHES



PRODUCT SPECIFICATION

Legs	Brushed copper M10 DeLabré B stainless steel E5 Matt lacquered stainless steel M15
	  
	M10 E5 M15
Assembly	Shipped disassembled
Usage	Indoor use
Details	– Sculptural table with two cylindrical legs – Legs and top finishes can be combined as desired

SPECIFICHE PRODOTTO

Gambe	Rame spazzolato M10 Acciaio inox DeLabré B E5 Acciaio inox laccato opaco M15
	  
	M10 E5 M15
Assemblaggio	Spedito smontato
Utilizzo	Uso interno
Dettagli	– Tavolo scultoreo con due gambe cilindriche – Le finiture delle gambe e del top sono combinabili a piacere

ON REQUEST

Finishes	The product is available only in the finishes listed
Dimensions	– The product can also be made in dimensions on request, subject to confirmation of feasibility by De Castelli – For custom made products please specify the dimensions, material and finishing – Price is on request

SU RICHIESTA

Finiture	Il prodotto è disponibile solo nelle finiture previste a listino.
Dimensioni	– Il prodotto può essere realizzato anche in dimensioni su richiesta, previa conferma fattibilità da parte di De Castelli – In fase di richiesta specificare le dimensioni, il materiale e la finitura – Il prezzo è a preventivo